

DAIMLER TRUCK

Readying Southern California Edison's Grid for Our EV Future

Diego Quevedo

Infrastructure Strategy

Daimler Truck North America

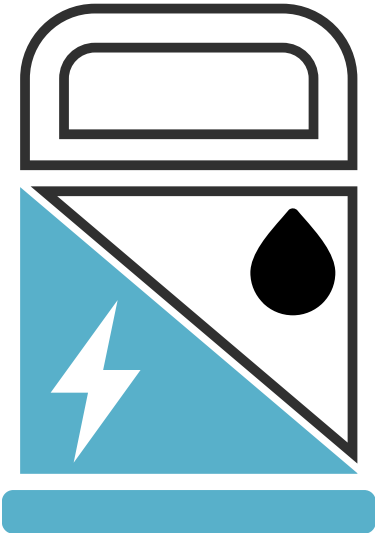


DAIMLER
TRUCK
Financial Services

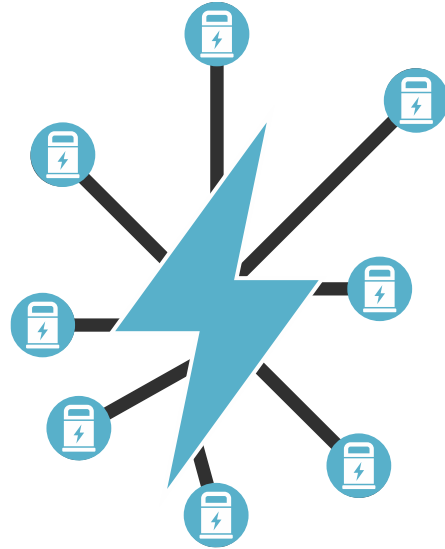
FORMULA FOR SUCCESS



VIABLE PRODUCT SOLUTIONS



TOTAL COST OF OWNERSHIP PARITY



DEPENDABLE CHARGING INFRASTRUCTURE

Significant Infrastructure Upgrades Will Be Necessary to Support a ZEV Mandate in California



CALIFORNIA REPUBLIC

5 years average of new registrations in California (from Polk Database)



Table A-1. ZEV Sales Percentage Schedule

Model Year	Class 2b-3 Group	Class 4-8 Group	Class 7-8 Tractors Group
2024	5%	9%	5%
2025	7%	11%	7%
2026	10%	13%	10%
2027	15%	20%	15%
2028	20%	30%	20%
2029	25%	40%	25%
2030	30%	50%	30%
2031	35%	55%	35%
2032	40%	60%	40%
2033	45%	65%	40%
2034	50%	70%	40%
2035 and beyond	55%	75%	40%



Use Case	Estimated California Installed Capacity (MW)- Per Class									
	2024	2025	2026	2027	2028	2029	2030	2031	2032	2033
Distribution Truck Cl. 6	15	18	21	33	49	65	82	90	98	106
Distribution Truck Cl. 7	15	18	21	33	50	66	83	91	99	107
Distribution Truck Cl. 8	25	30	36	55	82	110	137	151	164	178
Walk in Van	23	28	33	52	77	103	129	142	155	167
Daycab Distribution	27	37	54	80	107	134	161	187	214	214
Class 2/3 Trucks	13	19	27	40	54	67	81	94	108	121
Total MW in CA	118	151	192	293	419	545	672	755	838	895

Based on projected volumes, product mixes, and expected power consumption needs, infrastructure needs to support California’s proposed adoption of the ACT rule can be projected. Compared to today, by 2033, California would need to add:

\$3.3B

Funding for charging equipment & installation

~5 gigawatt

Additional installed capacity

\$1.8B – 3.9B

Funding for grid upgrades

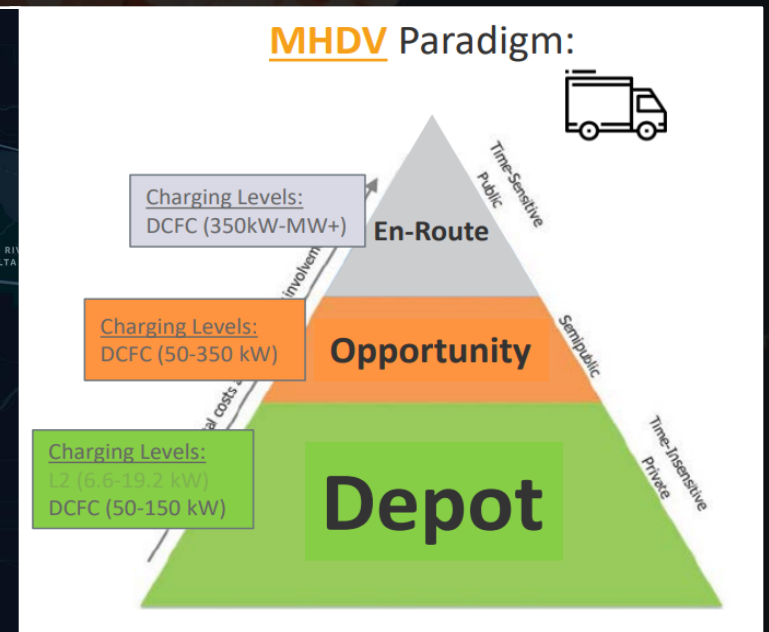
Daimler Truck collaborates with utilities to support infrastructure development

Daimler Truck offer to utilities

- Daimler Truck can engage with utilities to share insights on Vehicle Telematics Data
- Utilities can leverage data to build the grid capacity necessary to support commercial EV charging
 - Critical in states that adopted ACT rule or areas that perceive distribution inadequacies
- Offer open to utilities to have reoccurring access to the data

Data insights

- Detailed location on future MW load
- Example: **18.2 MW highlighted area Fairview/Troutdale, OR**



Additional Examples

